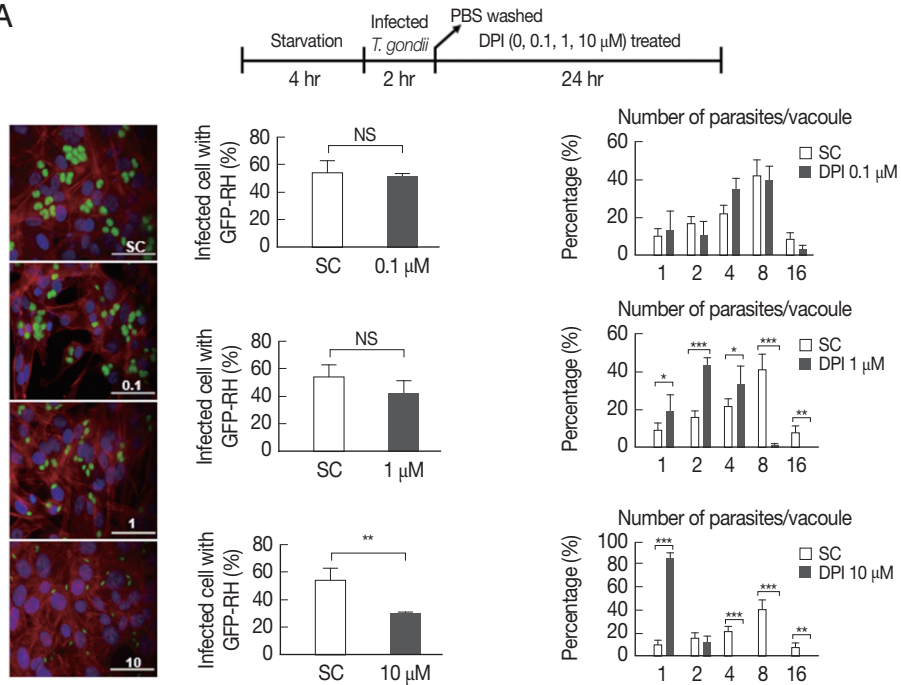
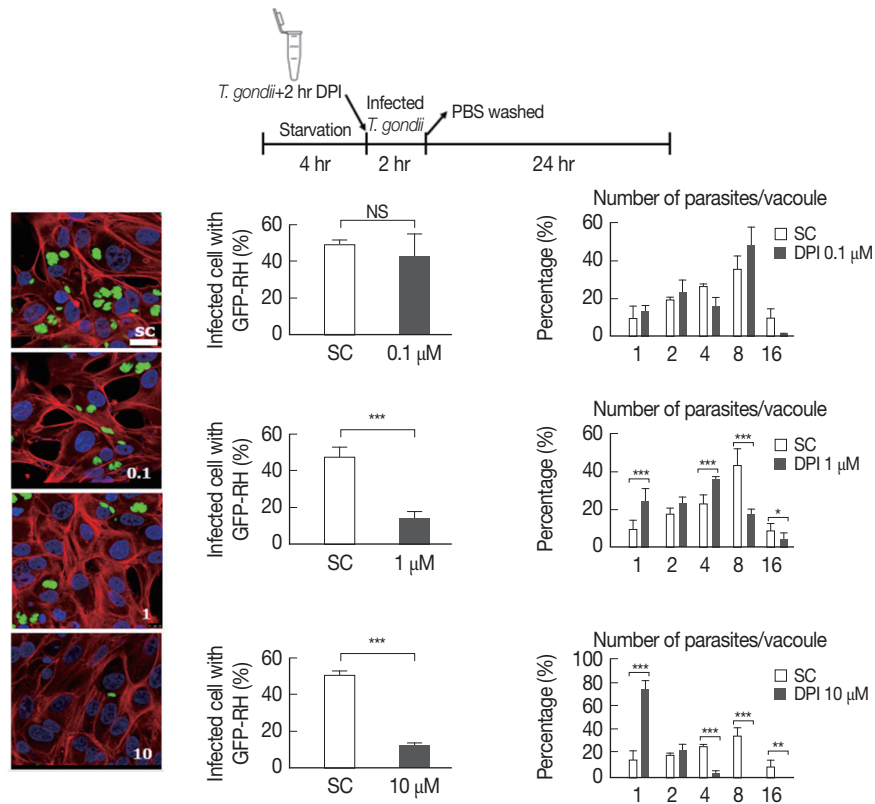


A

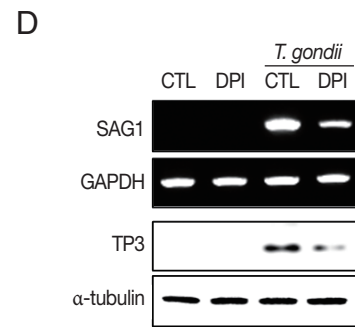
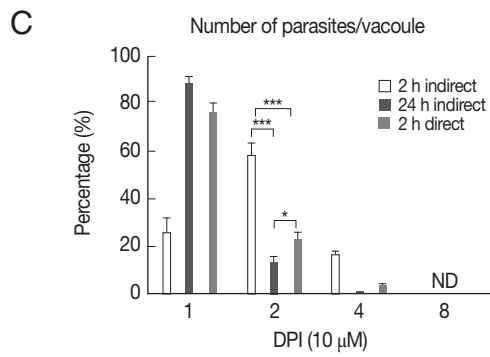


B



**Supplementary Fig. S2.** DPI has suppression effect on *T. gondii* proliferation and infection in ARPE-19 cells. The *T. gondii* growths in ARPE-19 cells were measured by fluorescence microscopy. (A) The ARPE-19 cells were infected by *T. gondii* and then treated with different concentrations of DPI (0, 0.1, 1, and 10  $\mu\text{M}$ ), and (B) the host cells were infected with DPI-treated *T. gondii*. The number of infected cells by *T. gondii* and the number of parasites per vacuole were counted and from DPI-treated *T. gondii* converted to percentage.

(Continued to the next page)



**Supplementary Fig. S2.** Continued. (C)  $*P < 0.05$ ,  $**P < 0.01$ ,  $***P < 0.001$ . (D) RT-PCR and western blot were performed to measure *T. gondii* infection level. Experiments are repeated at least 3 times (2-tailed student's test).